



2007-2008 Annual Report



Our purpose is to protect children, strengthen and shelter families and individuals, foster self-sufficiency, and facilitate a caring community.

Table of Contents

Message from the Director.....	3
Board of Trustees.....	4
Annual Budget.....	5
Expenses.....	6
Programs & Services.....	7
Community Action.....	8
Transitional Housing.....	10
Crisis & Respite Nursery.....	11
Parent Education.....	13
Therapy.....	14
Member Organized Resource Exchange (M.O.R.E.).....	15
Uniting Neighbors.....	16
Success Stories.....	17
Donors.....	19

Message from the Director



Sharon Anderson, Executive Director

I was so glad to participate with the United Way of Salt Lake in their “Live United” campaign this year. Our Uniting Neighbors program is attempting to bring people in neighborhoods together to support one another and especially our children. The goal is to make Davis and Morgan Counties a place where everyone belongs.

At the Family Connection Center (FCC), United Neighbors is just one of several programs designed to help make our mission statement a reality.

Our mission is to protect children, strengthen and shelter families and individuals, foster self-sufficiency, and facilitate a caring community.

FCC is both a Family Support Center and The Community Action Agency in Davis and Morgan counties. Our passion is preventing child abuse and poverty. Our programs include a Crisis/Respite Nursery, Parent Education Department, Therapy, Transitional Housing, Community Action programs, Member Organized Resource Exchange, and Uniting Neighbors.

With a combination of these programs and much more, the staff at FCC are able to help prevent family violence, provide a safety net to “at risk” families, and help people and families to become self-sufficient.

The staff at FCC participated in the Pathways to Excellence program designed by the Community Action Partnership. The result was to focus our attention on growing and strengthening the interior structure of our center in order to maintain a high standard of care and service. The staff are wonderful and have all helped to make many changes throughout the system. These changes are having the effect of increasing productivity, efficiency, and data collection.

I hope you enjoy reading this annual report as you become aware of all the wonderful work that is being done. In conclusion, the staff and clients want to thank all the donors, foundations, federal, state, and local governments, and everyone who has helped to make this last year possible. At the Family Connection Center, we truly believe that we must “Live United” in order for us all to succeed.

Board of Trustees

President: Lynette Stephens
Vice President: Tamara Pont
Secretary: Tom Tolman

Financial

Christine Humphrey
Ann Kagie

Policy

Gary Longmore
Ann Kagie

Development

Teri Cooper
Tom Tolman

Nominating

Louenda Downs
Mayor Dean Pace
Mayor Don Wood

Programming-Services

Lynette Stephens
Laura Samora
Tamara Pont
Catherine Leaverton

Annual Budget

Fiscal Year 2007-2008 Revenue

Sources of Revenue

Federal	\$664,490
State	\$483,550
United Way	\$172,721
Donations	\$189,637
Client Fees	\$34,553
In-Kind Donations*	\$309,404
Volunteer Services*	\$64,402
Unrealized loss	\$-0
Earned Interest**	\$49
Total Income	\$1,918,806

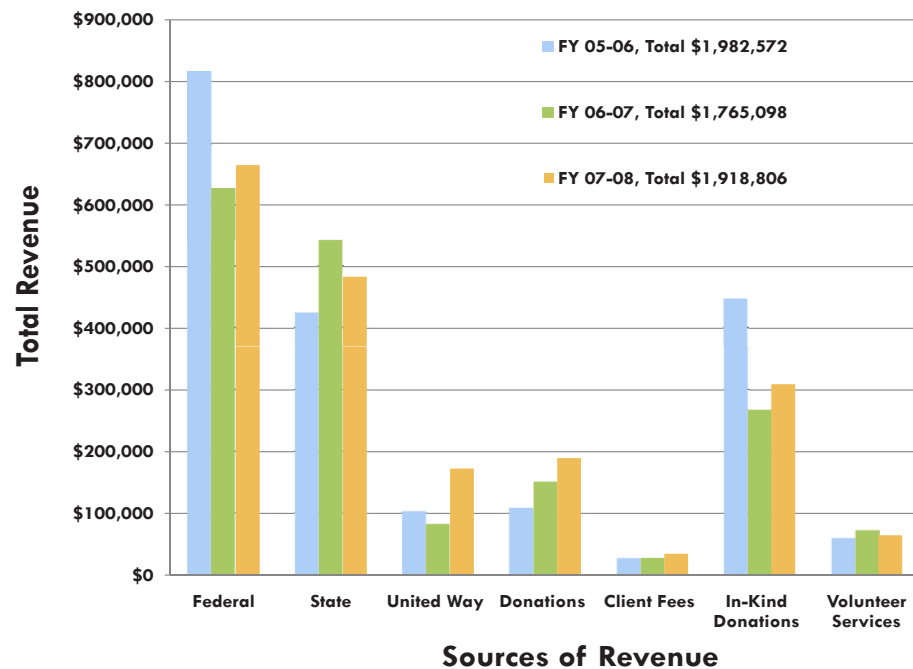


Figure 1.1 Revenue Compared for the Last Three Fiscal Years

*While donated items and volunteer hours are not direct cash, they have value and are included in our audit as part of our total revenue.

**Each year the agency receives revenue through earned interest, \$49 in Fiscal Year 2007-2008

Expenses

Fiscal Year 2007-2008 Expenses By Category

Total Expenses **\$2,192,405**

Fundraising	\$23,617
Management & General	\$271,844
Program Services	\$1,896,944

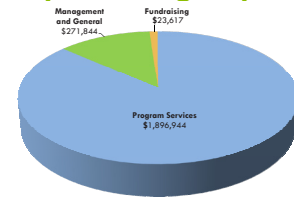


Figure 2.1 Expenses By Category for Fiscal Year 2007-2008

Program Services: Expenses By Department

Community Action	\$325,000
Transitional Housing	\$296,000
Crisis & Respite Nursery	\$245,000
Parent Education	\$157,000
Therapy	\$180,000
M.O.R.E. (Thrift Store)	\$150,000
<u>Uniting Neighbors</u>	<u>\$4,000</u>
Subtotal	\$1,357,000
In-Kind Services*	\$473,000
<u>Depreciation</u>	<u>\$67,000</u>
Total Expenses	\$1,897,000

*In-Kind Services include the value of donated food and other public donations given to clients and the value of volunteer services.

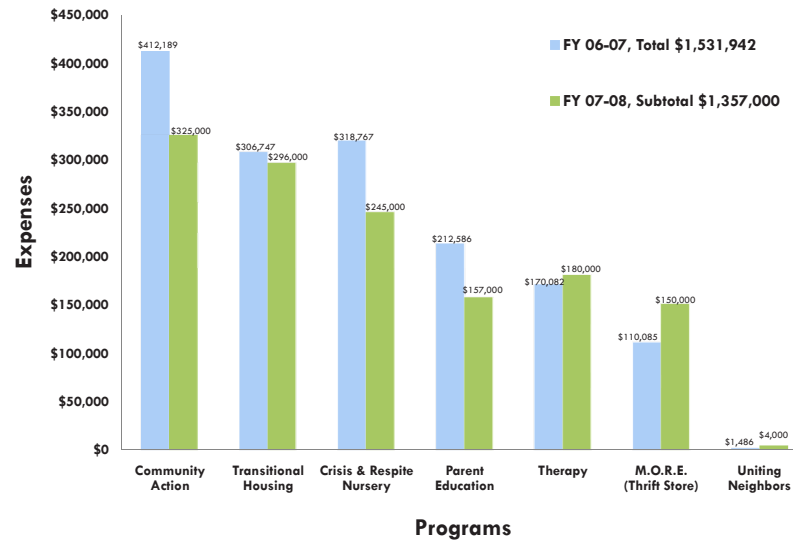


Figure 2.2 Expenses Compared by Program for the Last Two Fiscal Years

Programs & Services

The Family Connection Center offers a wide range of programs and services to individuals and families in Davis and Morgan Counties. The following pages include a brief synopsis of each department, including the programs they offer and a summary of the outcomes for the 2007-2008 fiscal year.

In the fiscal year 2007-2008, the Family Connection Center served 18,382 (unduplicated).

The following is a list of the departments at the Family Connection Center:

- Community Action
- Transitional Housing
- Crisis & Respite Nursery
- Parent Education
- Therapy
- Member Organized Resource Exchange (M.O.R.E.)
- Uniting Neighbors

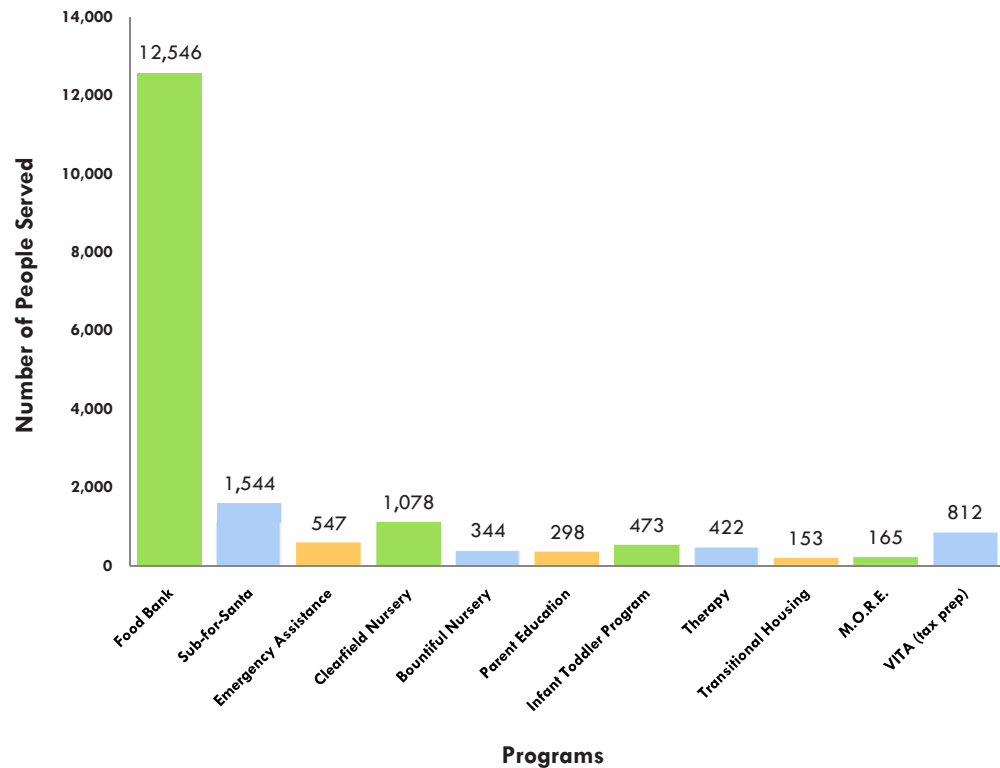


Figure 3.1 Number of Peopled Served at the Family Connection Center during the Fiscal Year 2007-2008 by Department

Community Action

The Community Action Department is located at the Layton Office and runs a variety of programs, including the local food bank and emergency assistance. They offer all of the following services:

- Emergency assistance
- Food Bank
- Motel vouchers
- Mobile food program (meal home delivery to elderly and disabled)
- Information and referral
- Case management
- Sub-for-Santa
- Holiday food boxes
- Distribution of donations (Bed, Bath & Beyond, Williams & Sonoma)
- Financial Counseling (AAA Credit Foundation)
- Volunteer opportunities

Community Action Mission Statement

Community Action changes people's lives, embodies the spirit of hope, improves communities, and makes America a better place to live.

Emergency Assistance Service Outcomes

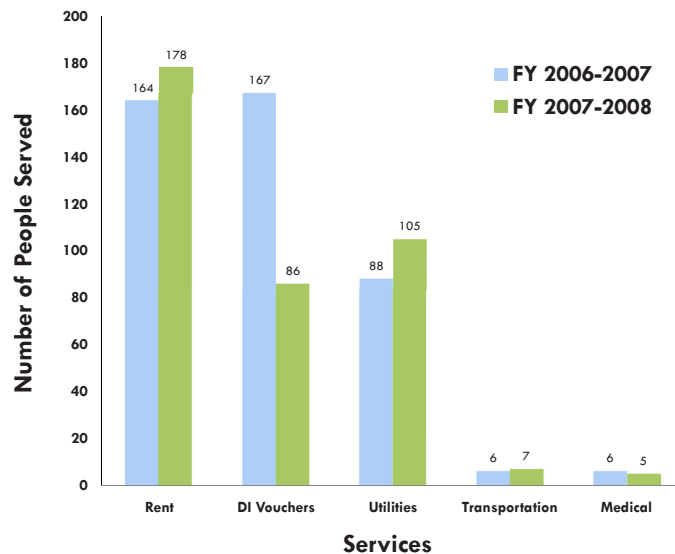


Figure 4.1 Emergency Assistance Service Comparison of Fiscal Years 2006-2007 and 2007-2008

Food Bank Service Outcomes

During FY 2007-2008, the Food Bank gave out **20,108** units of service to **6,558** individuals. The Food Bank also distributed **1,539** holiday food boxes, which served **4,449** individuals.

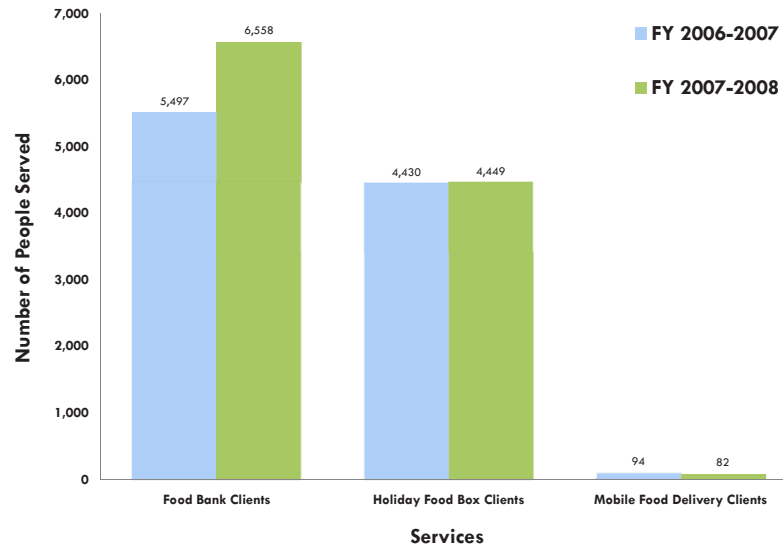


Figure 4.2 Food Bank Service Comparison of Fiscal Years 2006-2007 and 2007-2008

The unit of service used by the Food Bank equals a 3-5 day emergency food supply for one person. So, if a single individual receives services, he receives one unit of service (or one 3-5 day supply of food); if a family of ten receives service, they receive ten units of service (or ten 3-5 day supplies of food).

Many people and families use the food bank more than one time per year. During Fiscal Year 2007-2008, the food bank gave out 20,108 units of service to 6,558 individuals.

Holiday Food Boxes provide an entire Thanksgiving or Christmas meal for a family, including turkey or ham, with all the trimmings and dessert. In Fiscal Year 2007-2008, the Food Bank distributed 1,539 holiday food boxes, which served 4,449 individuals.

Other Community Action Services Outcomes

Sub-for Santa Clients	1,544
Volunteer Hours	3,618.50
Information and Referral	13,729

Figure 4.3 Service Counts for Other Community Action Services for Fiscal Year 2007-2008

Transitional Housing

The Transitional Housing Department is located at the Clearfield Main Office and provides numerous services to homeless, single parents (and a few two-parent families) who are accepted onto the Transitional Housing program. They offer all of the following services:

- Aid in locating and maintaining safe, decent, and affordable housing
- Case management
- Preparation for vocational training and work
- Life skills classes

Transitional Housing Mission Statement

Through prevention, intervention, and awareness, we will empower homeless families and individuals to take the steps toward independent living.

During FY 2007-2008, the Transitional Housing Department served a total of 47 families, which consisted of 49 adults and 104 children.

Transitional Housing Outcomes

- 47 Families (100%) moved into permanent housing
- 36 Families (77%) resided in permanent supportive housing for over 6 months
- 34 Heads of Households (72%) obtained or maintained employment
- 25 Heads of Households (53%) completed at least 6 Life Skills Classes
- 12 Heads of Households (26%) obtained a certificate of completion in a school program with a positive job outlook

Clients served

- 47 families (which consisted of 49 adults and 104 children)

Client Monthly Income Outcomes

Entrance

Monthly Income	Number of clients
No income	5
\$1-1000	20
\$1,001+	2

Average income at entrance: \$488

Exit

Monthly Income	Number of clients
No income	0
\$1-1000	15
\$1,001+	12

Average income at exit: \$1,087

Figure 5.1 Increase of Monthly Income over Time for Fiscal Year 2007-2008

Crisis & Respite Nursery

The Crisis & Respite Nursery is run at both the Clearfield Main Office and the Bountiful Office. The purpose of the nursery is child abuse prevention. The nursery consists of two main services:

- Crisis Nursery (available to parents in crisis for up to 72 hours)
- Respite Nursery (provides 2-3 hour timeout breaks for parents to attend appointments, relax, etc.)

Also, the Nursery Department has an infant & toddler specialist, who provides free technical assistance and consultation to child care centers participating in the Utah Office of Child Care Baby Steps Project and other infant and toddler initiatives.

Nursery Mission Statement

Our mission is to prevent child abuse by providing a safe house for children ages 0 to 11 years and by ensuring a positive, nurturing experience for every child who visits the crisis nursery.

During FY 2007-2008, the Nursery Department served a total of 454 families, which consisted of 526 adults and 896 children.

Nursery Outcomes

Number of Clients Served (unduplicated)

	Children	Adults	Families
Clearfield	682	396	362
Bountiful	214	130	92
Combined Total	896	526	454

Figure 6.1 Number of Clients Served in Clearfield and Bountiful Nursery

FRIENDS Outcome Evaluation Survey Fiscal Year 2007-2008 Results*

Crisis Care

- 94% of clients who used the center for crisis care reported that some of the stress and trauma of their crisis was alleviated because a safe house was available for their children
- 83% reported that their children would have been left in less desirable circumstances had they not used our services

Respite Care

- 96% of clients who used us for respite care reported that their stress was reduced

*For both crisis and respite care, we used the FRIENDS Outcome Evaluation Survey. This detailed survey is a self-report by clients. We surveyed the clients in January and July 2008.

Infant & Toddler Specialist Outcomes

Child Care Centers Involved

Number of Centers	23
Number of Rooms	45
Number of Children	340
Number of Directors	23
Number of Caregivers	110

Figure 6.2 Child Care Centers Involved with the Infant & Toddler Specialist for Fiscal Year 2007-2008

Infant & Toddler Specialist Hours

Technical Assistance hours	336
Training hours	967
Observations/Feedback (32 observations total)	489
Total Hours	1792

Figure 6.3 Reported Hours of the Infant & Toddler Specialist in Each Main Area for Fiscal Year 2007-2008

Parent Education

The Parent Education Department is located at the Parent Education Building in Clearfield. They offer all of the following services:

- In-home parent education
- Court ordered parent education
- Parents as Teachers (PAT) program
- Vision, hearing, and developmental screenings (as part of the PAT program)
- Parenting classes
- Monthly Group Meetings
- Information and referral to connect families to community resources

Parenting Education Mission Statement

The Parent Education programs hope to strengthen and stabilize families by providing support, education, and access to community resources.

During FY 2007-2008, the Parenting Education Department served a total of 67 families in the parenting classes and a total of 62 families with in-home parenting services.

Parenting Outcomes

Parenting Classes

- 67 clients received 573 hours of class instruction

In-Home Parenting

- 62 families (85 parents and 146 children) served
- 530 home visits
- 69 health and developmental screenings
- 194 referrals to other community services
- 169 emergency resources (food, clothing, etc.)

All parents in the In-Home Parenting Program are given a pre- and post-test called the Adult-Adolescent Parenting Inventory (AAPI). The assessment tool measures parenting and childrearing attitudes. Improvement in scores from the pre-test to the post-test indicates parents are adopting healthier parenting attitudes and behaviors, which, in turn, leads to a decrease in the risk to children.

The 2007-2008 AAPI scores indicate that there was a:

- 20% average increase in empathy toward child's needs
- 13% average improvement in appropriate parent/child roles and responsibilities

Therapy

The Therapy Department is located at the Layton Office. They have therapy services for those in need who may not be able to afford regular counseling. They offer the following forms of therapy:

- Play therapy
- Sand tray therapy
- Family therapy
- Marriage therapy
- Individual therapy
- Neurofeedback
- STEP families classes
- Anger Management classes

Therapy Mission Statement

Our mission is to assist individuals and families to resolve the pain and suffering of physical, sexual, and emotional abuse and trauma, and to increase their resiliency, quality of life, and relationship functioning.

Counseling services are provided at a greatly reduced cost from most other not-for-profit organizations and private therapy providers in the county.

Therapy Outcomes



Figure 8.1 Scores for the OQ45.2 Outcome Questionnaire in the Therapy Department (a lower score indicates lower distress and improved satisfaction and functioning. Any score below 60 is considered a healthy level of functioning)

During the Fiscal Year 2007-2008, the Therapy Department served 262 individuals in therapy, 25 individuals in neurofeedback, and 135 individuals in groups or classes. Total, they served 422 clients in a total of 3,273 hours of service.

During FY 2007-2008, the Therapy Department served a total of 422 clients in 3,273 hours of service.

M.O.R.E.

The M.O.R.E. program stands for Member Organized Resource Exchange. It is located at the Parent Education Building in Clearfield. The M.O.R.E. project is a resident driven resource sharing plan designed to strengthen and expand on existing service delivery networks in Davis County. This network engages residents of low-income housing towards a self-sustaining community. The M.O.R.E. program offers all of the following services:

- Women's support group
- Survival English classes
- Tutoring
- Workshops (topics related to the needs of the M.O.R.E. members)
- Speaker's Bureau
- Parent Night: How to Navigate Through the Educational System

M.O.R.E. Mission Statement

The Member Organized Resource Exchange (MORE) program empowers people in the community to provide for their own needs by supporting one another in resource sharing and becoming self-determined.

During FY 2007-2008, M.O.R.E. clients received 657 hours of service and provided 1106 hours.

M.O.R.E. Outcomes

Sub-for-Santa and the Christmas Party

92 children received gifts
92 clients received 276 hours of service
80 volunteer hours

Parent Night

26 clients received 78 hours of service
18 volunteer hours

Workshops

27 clients received 40.5 hours of service
9 volunteer hours

Women's Support Group

5 clients received 82.5 hours of service

Speakers Bureau

15 clients received 180 hours of services
24 volunteer hours

Thrift Store

Operated from July 2007 – March 2008
975 volunteer hours

Total Service Hours Received by M.O.R.E. Clients = 657 hours

Total Volunteer Hours Provided to the M.O.R.E. Project = 1,106 hours

Uniting Neighbors

The Uniting Neighbors program is designed to connect members of Davis and Morgan Counties by encouraging individuals from different ethnic, religious, political, and cultural backgrounds to contribute their abilities to help meet the challenges within their own neighborhoods. They work to help build a community where all viewpoints are acknowledged and valued—a community where neighbors watch out for each other and prepare for unforeseen emergencies.

Uniting Neighbors Mission Statement

Our mission is to empower communities and neighborhoods to build a welcoming, safe, and prepared county through volunteer coordination, training, and recognition.

Uniting Neighbors Vision Statement

Our vision is to make Davis County a place where everyone belongs. Our goal is to have a neighborhood coordinator in every Davis County neighborhood to facilitate social events and to be a referral source for the neighborhood.

During FY 2007-2008, community organizations contributed approximately 8,000 volunteer hours.

Uniting Neighbors Outcomes

During Fiscal Year 2007-2008, community organizations contributed approximately 8,000 volunteer hours. The Uniting Neighbors also held an annual volunteer recognition dinner. For the dinner, all 15 Davis County cities and Morgan County selected a volunteer who received a recognition award for outstanding service to the community.

One of the programs run through Uniting Neighbors is called Earned Income Tax Credit (EITC). The program helps put together tax return forms for low income populations. In Fiscal Year 2007-2008, they completed 812 tax returns. From that, the EITC amount received by clients in tax refunds was \$260,923, and the total amount of refunds received by low income clients was \$843, 729.

Contributors

The following organizations contributed approximately 8,000 volunteer hours to empower communities and neighborhoods:

American Mothers	Davis Connects	Kaysville CERT
Bountiful Community Service Council	Davis County Clipper Newspaper	Molina Health Care Morgan City
Children's Justice Center	Davis County Sheriff	Sunset City
Citizens Corps	Davis School District	Tri County ILC
City of Layton	Family Connection Center	West Point City
Clearfield City	Farmington City	Westminster Church
Clinton Fire Department	Fruit Heights City	Woods Cross City
Community of Promise	Grace Baptist Church	

Success Stories

The Family Connection Center, as our name implies, is intentionally designed to bring together (to connect) families with resources. The wide array of opportunities we offer to members of our community is a united effort to help families achieve financial and emotional self-sufficiency.

The following true client stories (names have been withheld) illustrate the effectiveness of this united effort to connect families.

Overcoming Homelessness through Transitional Housing

The first family is comprised of a single mother with one young son. This mother was born and raised in Davis County and had a promising childhood and youth, graduating with honors and attending college. Roadblocks to success came in the form of an unplanned pregnancy, a struggling marriage with several separations, drug and alcohol abuse and treatment, and eventual homelessness. In her own words, this is what happened when she applied to the Transitional Housing Program.

“Being accepted into the program gave me hope and a new sense of confidence I had never felt. They helped me find a very nice and clean apartment to raise my son. With the tools of success I started to build my new future. I decided to get a divorce and a new career. I’m an Electrical Apprentice with the International Brotherhood Electrical Workers Union. I make excellent pay with bi-annual raises and full benefits. In five years I will become a journeyman Electrician and make over \$57,000 a year. Not only am I providing for my family, the Family Connection Center gives me the tools and life skills I need to keep going forward. I’m making much better decisions now. My life is full of possibilities and success because the Family Connection Center believed in me and gave me that helping hand.”

While this single mother primarily participated in the program provided by the Transitional Housing Department, her family also benefited from opportunities and services provided by the Nursery Department (which provided safe and free childcare during her meetings with her case manager) and the Community Action Department (which provided emergency food supplies). These additional resources enhanced the ability of this single mother to experience success and improvement within our agency.

Becoming Self-Sufficient through a Variety of Services

The second family, a two parent family with two children, has more broadly utilized four departments to increase the mother's financial and emotional self-sufficiency, which has resulted in positive changes for all family members. Members of the family have experienced the following difficulties: incarceration, unemployment, inadequate income, homelessness, lack of family support, mental health issues, and poor parenting.

During times of family crisis, the mother has used the Nursery Department services to ensure that her children were in a safe environment while she actively addressed problems. Over time, she has improved her situation to the point that she primarily uses the nursery for respite care instead of crisis care.

The same can be said of her use of the Community Action Department. The food bank programs have been crucial to provide emergency food supplies to her family, yet over time, she has decreased her dependency upon these services. As her financial self-sufficiency has increased, she has relied less upon assistance services.

As the mother's emergency family and financial needs were resolved and she experienced some stabilization, she realized that she also needed some emotional stabilization. She was referred to the Therapy Department and received free therapy services over the course of 12 months. During this time, her anxiety and depression symptoms decreased, her relationships improved, and her ability to function improved.

This parent also saw a need to improve her parenting and used the Parent Education Department to take classes, participate in parent groups, and receive case management services including in-home parenting instruction to improve her parenting skills. Her children's behavior has improved as she has learned to set boundaries, establish age-appropriate roles, and use positive consequence techniques.

The combined services of the Parent Education Department, the Nursery Department, the Community Action Department, and the Therapy Department have resulted in several positive changes for this mother and her family toward self-sufficiency. Perhaps of greatest significance, she not only moved from being unemployed to obtaining a job, but quickly moved to an even better job with an increase in income, improved benefits, and a much shorter commute.

Donors

The Family Connection Center would like to sincerely thank all those who contributed to the Center this year. Donations from the community help to support the success of the Center in helping community members in need. Thanks again!

Major Donors Contributing \$500 or More

American Express Center for Community Development
Black Family Foundation
Boeing Company
The Church of Jesus Christ of Latter Day-Saints Foundation
Citi Cards
Disney Worldwide Outreach
Ensign Systems
Exchange Club of Bountiful
George S. & Dolores Dore Eccles Foundation
Intermountain Healthcare Foundation
KSL 5 Television-Bonneville International Corporation
Kennecott Utah Copper Corporation
Masonic Foundation of Utah
Molina Healthcare Inc.
Davis Hospital
Northrop Grumman
Rocky Mountain Power Foundation
Saint Olaf Catholic Church
Simmons Family Foundation
Smith's Food & Drug Stores
Swanson Family Foundation
Target
Utah Families Foundation
Wal-Mart Foundation

Businesses, Churches, Organizations, & Schools

381 Troop
 4th Ward Kaysville
 5th Ward West Point
 Alliance for Unity
 Antelope Elementary
 Barnes Bank
 Bed Bath & Beyond
 Bluffridge Elementary
 Bountiful City
 Bountiful City Youth Council
 Bountiful Lions Club
 Burton Elementary
 Centerville Employees Association
 Chevron
 Citigroup
 Clearfield City
 Clearfield Community Church
 Clearfield Jr. High School
 Clinton Elementary
 Commissioner Cup Fund
 Coombs Orthodontics
 Cracker Barrel
 Creekside Ward Youth
 Cub Scouts Pack 431
 Curves of Clearfield
 Curves of Kaysville
 Curves of Layton
 Cutlers
 DVP Oakleaf Camp
 Dans Market
 Daughters of Utah Pioneers
 Davids & Design Works
 Davis Chamber of Commerce
 Davis Family Physicians
 Davis Hospital
 Davis School District
 Denny's Restaurant
 Desert Book Layton Hills Mall
 Dick's Marketplace
 Dollar General
 Doxey Elementary
 East Layton Elementary
 Fair Field Junior High
 First National Bank
 Ford Family Chiropractic
 Farmington Elementary
 Forthgear Inc.
 Fran Brown Beauty College
 Fraternal Order Eagles #3355
 Frito Lay
 Hancock & Associates
 Garaycochea Real Estate Corp.
 Gordons Copy & Print
 Head Start
 Heritage Elementary
 Hill Air Force Base
 Jiffy Lube
 Kaysville 9th Ward
 Kut-Ups, Kalico
 Lalco, Inc.
 Lantern Club
 Layton Elementary
 Layton High School
 Lifetime Products
 Lindon Elementary
 Lindquist Mortuary
 Moms Club of Layton
 Mayer Chiropractic
 Morgan Pavement Maintenance
 Mountain View Elementary
 North Davis Rotary Club
 Northern Utah Past Matron's Circle
 Pepsi
 Questar Corporation
 Red Hatters of Heritage
 Sand Springs Elementary
 Shopko
 Silverlake Neighborhood
 Smith's Grocery
 St. Peters Episcopal Church
 South Clearfield Elementary
 Striders
 Syracuse Quilt Guild
 Syracuse Utah Stake
 Target
 Thomson Premier Lighting & Appliance Center
 Tri City Nursery
 Troop 359 Fruit Heights 4th Ward
 U.S. Food Service
 Uinta Elementary
 Utah Food Services
 Utah, Mabuhay fim Assoc. of Davis County
 Walgreens
 Walnut Grove Ward
 Wasatch Church
 Wells Fargo Bank
 Westminster Presbyterian Woman
 Wight House Reception Center
 Williams-Sonoma
 Windsor Meadows 2nd Ward
 Woodbury Technologies, Inc.
 Young Chevrolet
 Young Men & Women, West Point Stake

Individuals

Allred, Kenneth	Canfield, Ora	Edwards, Mary Ann Bodily
Alomar, Viviana	Carroll, Linda Kay	Ehojnowski, John
Ames, Maureen	Casteel, Dave	Ericksen, Cheri
Amos, Ruth Ann	Casteel, Keely	Erickson, Deborah
Anderson, Ellen	Casto, Annette	Erickson, John
Anderson, Leah	Cella, Robert & Bonnie	Erickson, Wendy
Anderson, Sandy & Mikki	Chaplain, Laura	Falcione, Danielle
Anderson, Sharon	Cheney, Vila	Ferguson, Pat
Anderson, Terrence	Child, Wendell	Ferguson, Ron
Anez, Maureen	Chipman, John & Phyllis	Fiero, Barbara
Antanacio, Ray	Christensen, Mr. and Mrs.	Fisher, Valerie
Arave, Russell	Christensen, Scott & Teresa	Fitzgerald, Colleen
Aronson, Kevin	Christian, Lupe	Fleming, Nancy
Ash, Tabitha	Church, Angie	Flint, Kim
Ashton, Dennis & Joyce	Collier, Michelle	Ford, Duane R.
Ashworth, James & Joni	Collier, Stacy	Ford, Kimberly
Babinsky, Vicky	Collins, Robin	Frandsen, Nancy
Baker, Margaret	Cook, Joseph & Enid	Frandsen, Scott & Nancy
Banner, Wilma	Coolidge, Mary	Franks, Shaun
Barlow, Haven	Cooper, Teri	Frazer, Craig & Carol
Barlow, James & Dianne	Cornejo, Mr. and Mrs.	Gagner, Mr. and Mrs.
Barney, Marilyn	Cottrell, Rosemary	Galbraith, Kaite & Ryan
Bartley, Jack M.	Cox, Edward D. and Jane B.	Gallegos, Stephanie
Barton, Pam	Crawford, Marianne	Garcia, Charles
Bateman, Wendy	Crimser, Linda	Garcier, Kishima
Baxter, Lorraine	Crothers, Jenni	Gardner, Camber & Quin
Beery, Michelle H.	Crouse, Becca & Jason	Garner, Mr. and Mrs.
Belnap, Lori	Curtis, Lane	Garside, Georgia P.
Bennett, Braun	Cutler, Lorainne	Gilmore, Dan
Bennett, Peter	Dabb, Mr. and Mrs.	Godfrey, Lavar & Lona Mae
Best, Richard & Faith	Dansie, Trisha	Golightly, R. Bruce & Emma
Bigwood, Brooke	Davenport, Ernest	Gray, Lori
Bird, Randall	Davis, Tracy & Amy	Green, Mr. and Mrs.
Blake, Suzanne	Dawson, James & Beverly	Haines, Bonnie Rae
Boam, Kent	Day, John Paul	Hamilton, David
Boams, Mr. and Mrs.	DeBoe, Linda	Hampton-Hughes, Pat
Bond, Laura	Dinsdale, Cynthia	Hancock, Cyndi B
Borchert, David & Elizabeth	Donaldson, Emily	Hanner, Dennis
Bosley, Mr. and Mrs.	Donaldson, Gladene	Hansen, Nancy
Bourdeaux, Stephanie	Donnelson, Glenn	Harden, Robert
Bowen, Wilma	Downs, Commissioner Louenda	Hare, Jim
Bowles, Robert	du Preez, Amber	Haring, Marc & Gabrielle
Bowman, Jill	Draper, Carolyn	Harris, Alan
Bradovich, Kathie	Drumm, James	Harris, Jane & Van
Britt, Barbara	Drumms, James S. & Charely Angel	Hartley, RayLynn
Brverley, Connie	Duncan, Andrew	Hartvigsen, Paul or Lorna
Burdett, Larry	Duncan, Spencer	Hatch, Jill
Burnham, Delores H.	Dunn, Craig & Margaret	Hayes, John
Burrell, Annette	Duran, Diane	Heaton, Susie
Busselburg, Thomas	Durso, Mary	Helgesen, Jack
Callan, Mr. and Mrs.	Eckleson, Gary	Helmke, Joane
Canfield, Christie	Edgar, Gerald Thomas	Hemmelgram, Howard

Hendrickson, Trent & Carla	Landry, Anona R.	Muranaka, Mary Kay
Hennigar, Jill	Langevin, Marylou	Murdoch, George & Sharon
Henson, Dean & Dlorah	Larkin, Valerie	Murray, Evan
Herrera, Ramon	Larsen, Velma B.	Murray, Rita
Hess, Herbert Chad	Larson, Mr. & Mrs.	Murri, Cynthia
Hess, Scott	Latzen, Martha	Musgrove, Rodney
Higley, Martin	Layton, Douglas & Deonne	Nakaya, Mas
Hill, David & Melita	Leatham, Kim	Naneix, Robin
Holbrook, Angela	Leaverton, Catherine	Nelson, George & Dorothy
Holmes, Mr. & Mrs.	Leavitt, Lisa	Nelson, Jennifer
Holmes, Toni	Lefevre, William	Nelson, Mr. & Mrs.
Hope, Marilyn	Lefferth, William E.	Nelson, Ronald & Louise
Hoppe, Mr. and Mrs.	Lemon, Kevin & Linda	O'Brien, McKensy
Horne, Karen	Lewis, Mr. and Mrs.	Oliphant, Elizabeth
Hoskins, Curtis & Lois	Lindstrom, Eric	Olsen, Garrett
Hougaard, Jordan	Longmore, Gary	Olsen, Trudy
Houx, Kathy	Lopez, Alcides	Olson, Rex
Hsu, Chang & Hsu	Lopez, Gene & Lucy	Ottesen, Ronald & Ethel
Hughes, Pat Hampton	Love, Kristin	Ozminski, Mr. and Mrs.
Hulet, Dale & Christine	Lowder, Stephanie	Pace, Mayor Dean
Hulet, Donald & Kaysee	Lucas, Bill & Annettee	Page, Michael
Humphrey, Christine	Ludwig, Jon & Diane	Pappas, Heather
Hurst, Janet & Casey	Lunt, Ellen	Parkin, Patricia
Hyde, Donna S.	Lynch, Debbie	Parks, Julian
Hyems, Lisa	Lynch, Shirley	Patterson, Adelbert & Noma
Ingle, Dianne	Macfarlane, Jim & Peggy	Paulson, Mr. and Mrs.
Ingle, George & Dianne	Madill, Tanya	Perkes, Nicole R.
Ingman, Peter	Madsen, Jean	Perry, Barbara
Ipsen, Christine	Manner, Dennis	Perry, Bruse
Jacobs, Mr. and Mrs.	Mansfield, Alisa & Trent	Pertekis, Rick
Jacobsen, Mr. and Mrs.	Marazo, Louis	Peterokis, Randy
Jacobson, Becky	Marcsh, Thom	Peterson, Dale
Jense, Aaron	Marinez, Kathleen	Peterson, Sally
Jensen, B Fawn	Martinez, Carla	Pettingill, Fran
Jensen, Della	Mathies, Jennifer	Phelps, Lorraine
Johnson, Karla	Mauzey, Lynn	Pitt, John
Johnson, Penniston	Maycock, Kim	Politte, Christina
Johnson, Robyn	Mayfield, Mava	Pollock, Ken
Jones, Janiece	Maynor, Christine	Pont, Tamara
Jones, Kirk & Melani	McClung, John G.	Poore, Christina
Jones, Kyle	Mcqueen, Daniel	Pope, Kathy
Jones, Roger	Merrill, Mr. and Mrs.	Poulson, Robert & Barbara
Judkins, Jared	Miller, Darcy	Quigley, Ronald
Kagie, Ann	Minch, Mr. and Mrs.	Rampton, J.R. & M.S.
Kano, Lawrence	Minch, Donna	Ransom, Gary & Sue
King, Marlene	Moffat, Cathy	Ray, Darin & Elisa
Kowalczyk, Brooke	Molloy, Debbie	Reading, Ardis
Kowe, Gina	Mooney, Bob	Reid, Beth S.
Major, LTC RET	Mordue, Robert	Reid, Mr.
Richard & Mrs.	Mortensen, Elaine	Richardson, Gabriela
Lahey, Joe	Munro, Kristy	Richman, Dr. Brian
Lamb, Michael & Janice	Muranaka, Stephaine	Rinchort, Donna

Roach, Suzanne	Teare, Linda	Yeager, Darin
Robert Allotta & Rebecca Kniep	Teeples, Judith	Zabel, Gerald
Robinson, Denis & Lindee	Thomas, Janae	Zabela, Corrie Cain
Roewer, Shirley	Thompson, Jacqueline	Zabela, Mr. & Mrs.
Rogers, Craig	Thorne, Tim & LeeAnn	
Rogers, Marjorie	Thurgood, Dean B. & Ann M.	
Romney, Briant & Angela	Tingey, Mr. and Mrs.	
Rowe, Gina	Tingey, Lawana	
Ruiz, Juana	Tolman, Tom	
Russell, Doug	Troff, Daniel	
Russell, Kathleen	Trout, Raynette	
Salas, Sam	Trust, Haven J Barlow	
Samora, Laura	Turner, David	
Sanford, Jared	Tuttle, Donna	
Sarai, Jay	Uhrig, Julie	
Sawatski, Fred & Tori	Unrig, Terry & Julie	
Schaap, Jodi Ann	Valdez, Linda P.	
Schaefer, Holly J.	Vandever, Sharonn	
Schofield, Shane & Anne	Vandyke, Charles	
Schoof, Rosemarie	Waite, Paul	
Scott, Catherine L	Walker, Mr. and Mrs.	
Scoville, Kayleen	Ward, F. Perry	
Semadeni, Heidi	Warner, Jerii	
Sharp, Brandt & Kelly	Watts, Charles & Juanita	
Sheets, Mr. & Mrs.	Wehling, Lori	
Sheffield, Mr. and Mrs.	Welker, Kelly	
Shelley, Ned	Welsh, Jan	
Simpson, Sam	West, Vicky	
Skeen, Rena	Whitaker, Jan	
Slater, Tami	White, John W.	
Sleight, Robert & Margaret	Whitman, Todd & Linda	
Smith, D.W.	Wilde, Jason	
Smith, Elmer	Wilde, Wendell	
Smith, Jackie	Willard, Sally	
Smith, Lisa	Williams, Beverly	
Smith, Margaret	Williams, Janice	
Snyder, Brian	Williams, Sally	
Somerville, Angela	Williams, Sene & David	
Sommerville, Troy	Williams, Shirley	
Sopher, Rose	Williamson, Beverly	
Springer, Mr. & Mrs.	Wilson, Carrie	
Stafford, Stefanie	Wilson, Elisabeth, Zack & Allison	
Stark, C John	Wingert, Rita	
Stephens, Commissioner Lynette	Winter, Robert	
Stevenson, Lydle	Wong, Rubert	
Stewart, Valorie	Woodard, L.	
Stoddard, Venice	Woods Martiny, Lucy	
Suarez, Duane & Tara	Woods, Judy	
Sutherland, Kathy	Wood, Mayor Don	
Taylor, Clark A.	Wooten, R. Shein	
Taylor, Glenn	Wright, Evan	